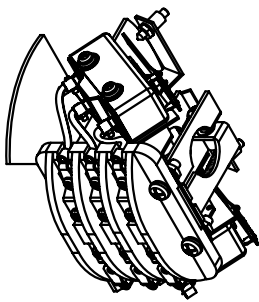
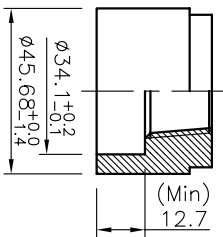


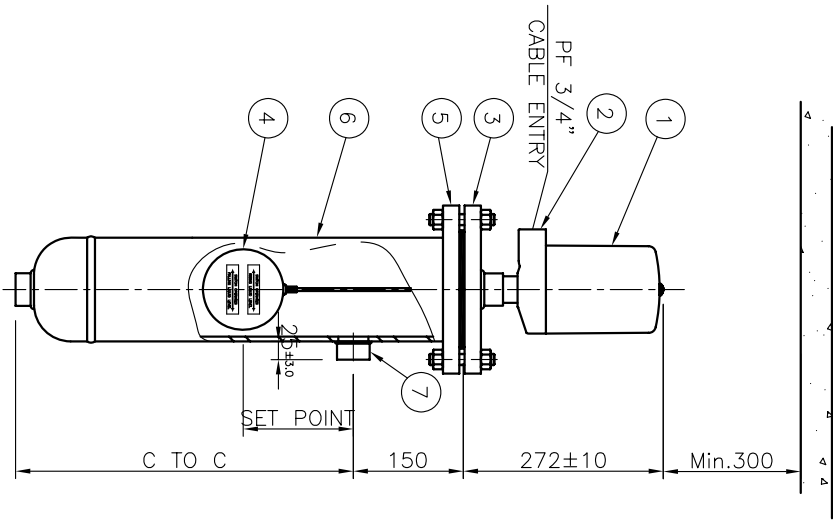
WIRING DIAGRAM



8 SNAP SWITCH



PROCESS CONNECTION



NO.	TAG NO.	FLUID(UPPER/LOWER)	OPER. PRESS. MAX.(Bar)	OPER. TEMP. MAX.(C)	RATING	SET POINT	C TO C (MEASURING RANGE)	CONNECTION 1"Sw 3000# (SIDE-BOTTOM)	Q'TY
1	-	-	-	-	150#	150	-	-	SETS

TOTAL Q'TY : - SETS

OR	OPENS ON RISING LEVEL
CR	CLOSES ON RISING LEVEL
OF	OPENS ON FALLING LEVEL
CF	CLOSES ON FALLING LEVEL
V	SWITCH ACTION

REV.	DESCRIPTION	DATE	DESIGNED	REVIEWED	APPROVED
△					
△					
△					
△					
△					

DESIGN DATA

CODE	KEPIC MGE & ASME B31.1		
UNIT	mm		
ENCLOSURE	WEATHER PROOF		IP65
ORDERING CODE	PROCESS TEMP(CONTACT RATING)		SNAP SWITCH MAT'L
1	Max.120°C (10A 120V AC / 0.6A 125V DC)		PC, PHENOL,304SS
2	Max.230°C (5A 250V AC / 0.5A 125V DC)		PC, CERAMIC,304SS
3	Max.400°C (1A 250V AC / 1A 30V DC)		PC, CERAMIC,304SS
4	Max.230°C (15A 250V AC / 1A 125V DC)		PC, CERAMIC,304SS
	HERMETICAL SEAL TYPE		

NOTES

- REFER TO INSTALLATION MANUAL
- WHEN YOU SET IT UP
- CABLE SIZE : 14 AWG.
- DEAD BAND IS 15mm FIXEDLY
- HEAD ROOM OF 300mm MUST BE SECURED ABOVE THE HEAD FOR INSTALLATION / REMOVAL AND MAINTENANCE
- CABLE CONNECTION IN TERMINAL PART VIA CLAMPED RING TYPE
- PAINTING SPEC : SEQUIN STD.
- TEST FOR WELDING : HYDRO+PT TEST
- CHAMBER ORDERING INFORMATION.  
SMC-75CH-A-1-A-1-A-1-C-1-A

11	GASKET	316SS	1
10	NUTS	A194 GR 2H	-
9	BOLTS	A193 B7	-
8	SNAP SWITCH		
7	PROCESS CONNECTION	A105	2 1"Sw 3000#
6	CHAMBER ASS'Y	A105	1 5" Sch.40
5	CHAMBER FLANGE	A105	1 5" RF
4	FLOAT	316LSS	1 ø110
3	SENSOR FLANGE	A105	1 5" RF
2	BASE	AC2B	1
1	COVER	C.S	1
NO	DESCRIPTION	MATERIAL	Q'TY SPECIFICATION

BILL OF MATERIAL

CUSTOMER	-
PROJECT	-

TITLE  
VERTICAL FLOAT TYPE LEVEL SWITCH  
SMC-75F-1-A-1-A-1-A-1  
ASSEMBLY DRAWING

Seoulin Instech Co., Ltd.

SCALE	1:1	REV	1
DATE	SU-MO15-DWG-AP401-B	REV	1
N/S		REV	1